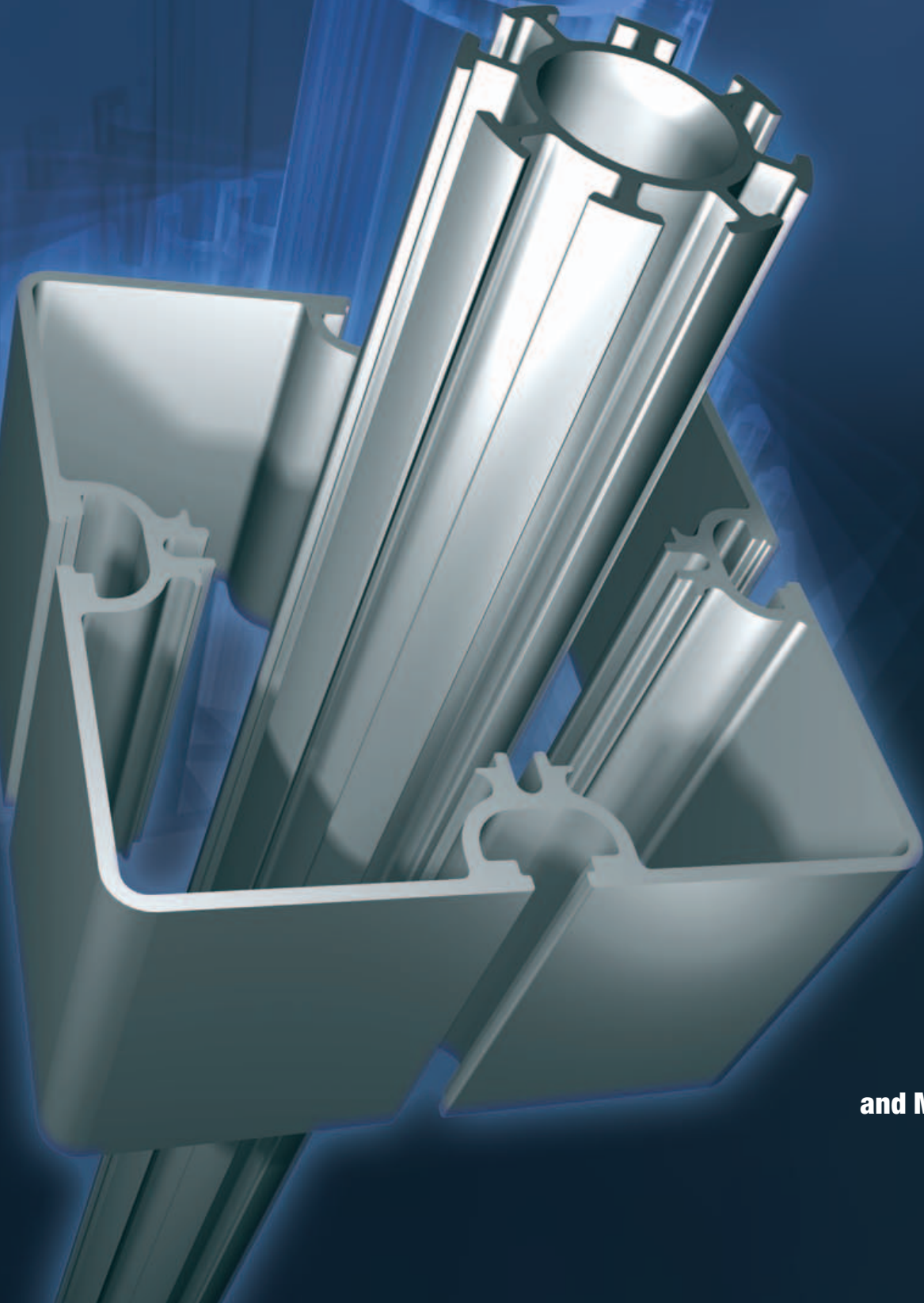


Exhibition
construction
systems

SYSTEM STANDEX®

**Cobra Expo
and Mega Profiles**





- for all displays

Cobra Expo from System Standex is a professional display range of accessories. The system is well designed, with and the creative possibilities are numerous. ideas about display sys-tems to suit your

system with a comprehensive making it easy to work Contact us for needs.

2



Two-floor stands. An extra storey provides a quiet upper area and good utilisation of stand space.



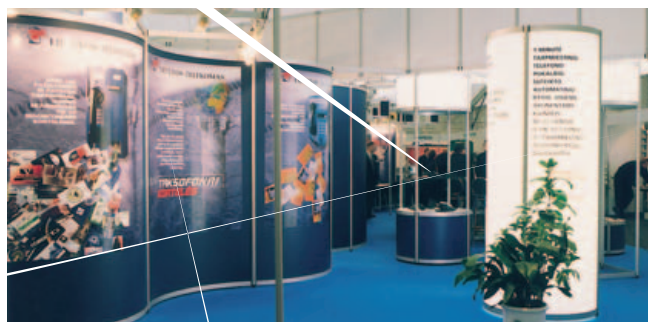
System stands. Cobra Expo provides a wide range of options for individual design of stands.



Flexible design. The possibilities are unlimited with Cobra Expo. System Standex also supplies specially-designed fittings allowing creative flexibility.



Exhibition centres. Cobra Expo is robust and easy to work with for shell schemes in exhibition centres.



Stand hire. Cobra Expo is flexible and easy to work with. It is also sturdy and remains in good condition even after many years' heavy use.



Showrooms. Cobra Expo creates an attractive backdrop for product launches and promotions.



Partitions. For simple, effective division of open-plan offices.



Museums. A flexible system, ideal for frequently changing museum displays.

Individual fittings. System Standex develops equipment for special projects, e.g. special shelves for book fairs.

Imaginative ideas - easy to create

Round uprights with 8, 6 or 4 channels

Uprights are important basic components of Cobra Expo. Their circular shape produces an attractive design and numerous creative possibilities. Uprights are available in 8, 6 or 4- channel versions which allows you to design stands with a wide variety of angles and create exciting, unusual display stands.

Range of colours

Cobra Expo is available with a silver-anodised finish or in a range of colours to suit your design. System Standex offers an in house powder coating service using the RAL range of colours. This allows us to provide a rapid turn round of specifically finished parts.

Comprehensive and well built constructions

Constructions are created using sturdy joints which are fixed to the horizontal rails. Fixings can be attached anywhere on the uprights and connections can be tightened with a single Allen screw.

Quality finish

Cobra Expo cross rails are fitted with nylon connectors which protect the system from marking and damage when being assembled. Cobra Expo can therefore be used many times while retaining its original attractive finish. Connectors are available in black or light grey.

Room for creativity

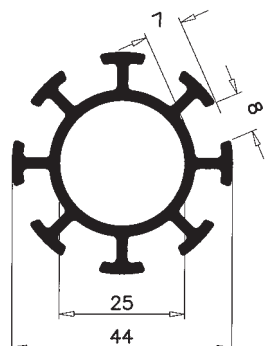
Cobra Expo cross rails are available as straight or curved sections in a range of radii, allowing room for creativity. Accessories to change curved sections from horizontal to vertical are also available, further increasing your options for creating an exciting, eye-catching stand.

Wide range of accessories

Cobra Expo also takes practical details into account. Accessories include fixings for hanging up graphics plates and photographs, magazine shelves and bookshelves, leaflet shelves, coat hook fittings, doors and spotlights.

Uprights

Uprights with 8, 6 or 4 channels are available. Uprights come in standard lengths and are suitable for most purposes. They can also be supplied in shorter lengths if required or in 5 m lengths for customers to prepare. The short uprights are available with or without adjustable feet.

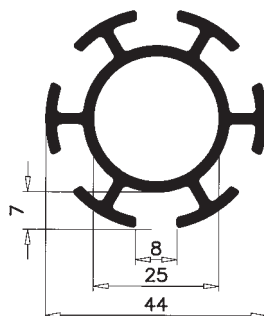


8-channel upright with adjustable foot

1204-1	500 mm	1204-4	2450 mm
1204-2	700 mm	1204-5	2500 mm
1204-3	1000 mm	1204-S	in lengths specific to the project

8-channel upright, profile only

1203-7	50 mm	1203-5	2410 mm
1203-1	150 mm	1203-6	2460 mm
1203-8	300 mm	1203-S	in lengths specific to the project
1203-2	460 mm	1100-1	in 5 m lengths
1203-3	660 mm		
1203-4	960 mm		

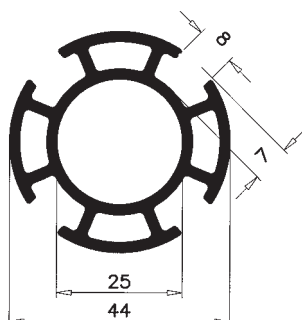


6-channel upright with adjustable foot

1304-S in lengths specific to the project

6-channel upright, profile only

1100-2 in 5 m lengths



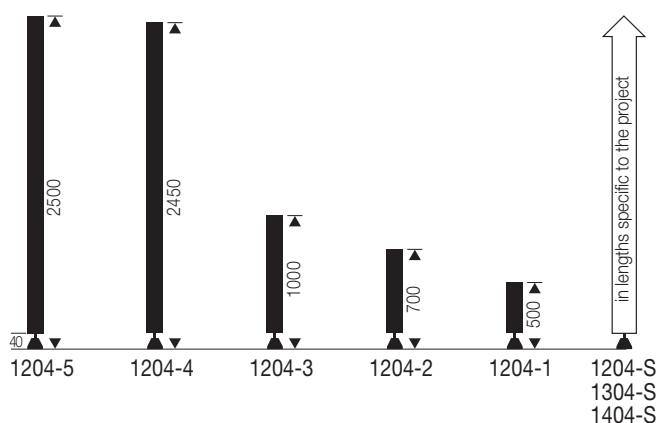
4-channel upright with adjustable foot

1404-S in lengths specific to the project

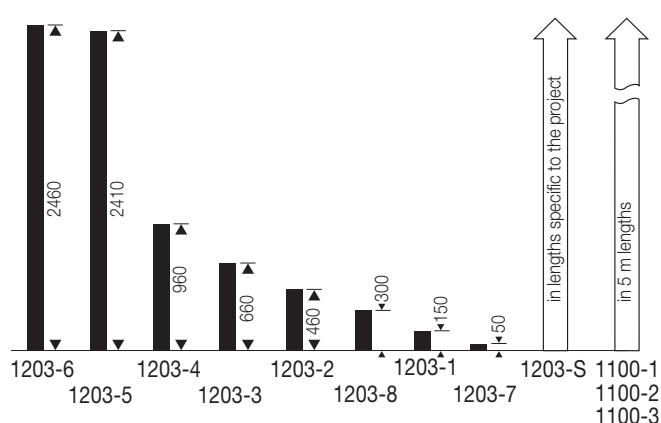
4-channel upright, profile only

1100-3 in 5 m lengths

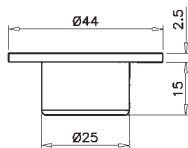
Complete uprights with adjustable foot



Uprights without adjustable foot

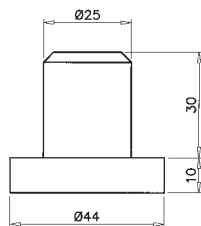


Accessories for uprights

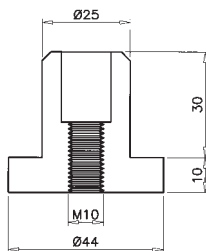


1105-1 Top plug for uprights, black

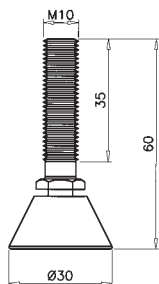
1105-2 Top plug for uprights, grey



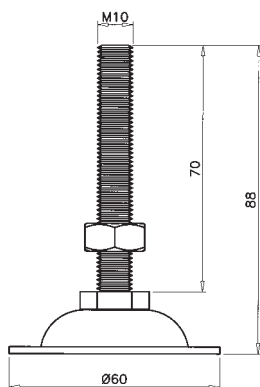
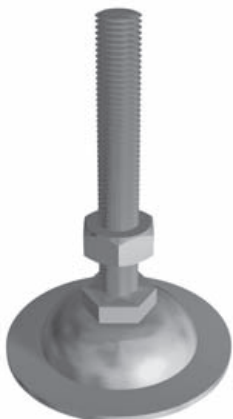
1105-3 Bottom plug for uprights, black



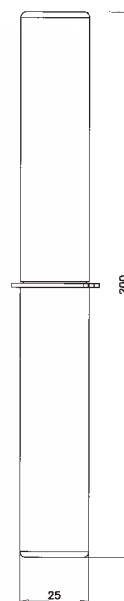
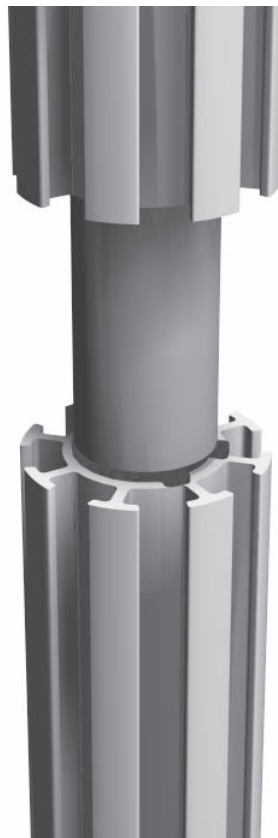
1105-4 Threaded bottom plug for uprights, black



1105-5 Adjustable foot for bottom plug 1105-4, black

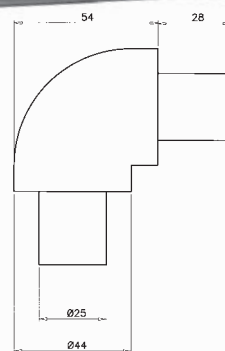
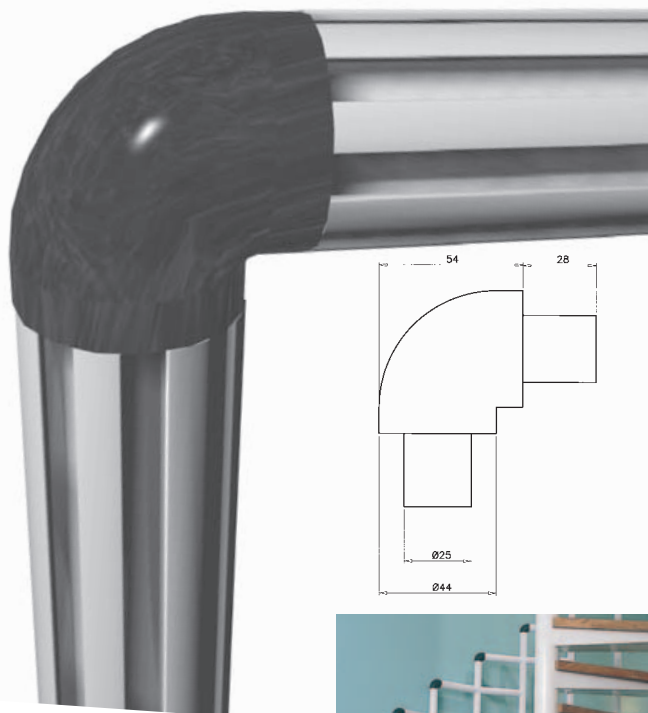
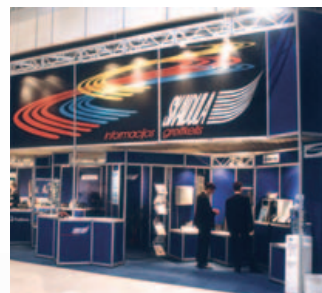


1105-6 Adjustable foot for bottom plug 1105-4, metal



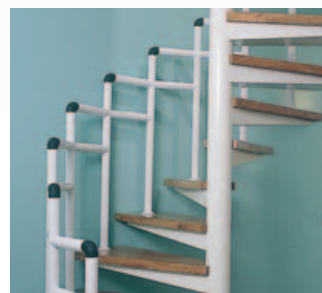
Upright extensions allow standard upright lengths to be used to create stands with extra height. This is also a practical solution for transport.

1108-1 Upright extension



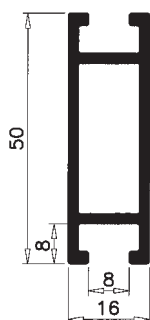
1108-2 Upright joint, black

Upright joints also allow uprights to be assembled horizontally, providing a new range of creative options.



Cross rails

Cross rails are available in widths of 50 mm or 150 mm. They are available in standard lengths, starting with a 1/4 module and up to a full diagonal. The cross rail profile can also be supplied cut to your specific size or as a stock 5 metre length. Special sizes can be supplied with pre-fitted connectors.



50 mm cross rail

With joint and connectors

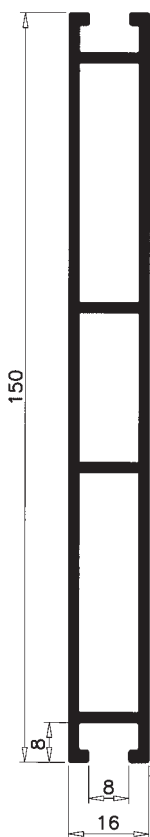
- 1201-1** 1/4 module
- 1201-2** 1/2 module
- 1201-3** 3/4 module
- 1201-4** 1 module
- 1201-7** 2 modules
- 1201-8** 3 modules

- 1201-9** 4 modules
- 1201-10** 5 modules
- 1201-6** 1/2 module diagonal
- 1201-5** 1 module diagonal
- 1201-S** in lengths specific to the project

50 mm cross rail

Without joint and connectors

- 1102-1** in 5 m lengths



Curved 50 mm cross rail

With joint and connectors

- 1202-1** 1/4 curve
- 1202-2** 1/2 curve
- 1202-3** diagonal curve
- 1202-S** special curve specific to the project



150 mm cross rail

With joint and connectors

- 1200-1** 1/4 module
- 1200-2** 1/2 module
- 1200-3** 3/4 module
- 1200-4** 1 module
- 1200-7** 2 modules
- 1200-8** 3 modules
- 1200-9** 4 modules
- 1200-10** 5 modules
- 1200-6** 1/2 module diagonal
- 1200-5** 1 module diagonal
- 1200-S** in lengths specific to the project

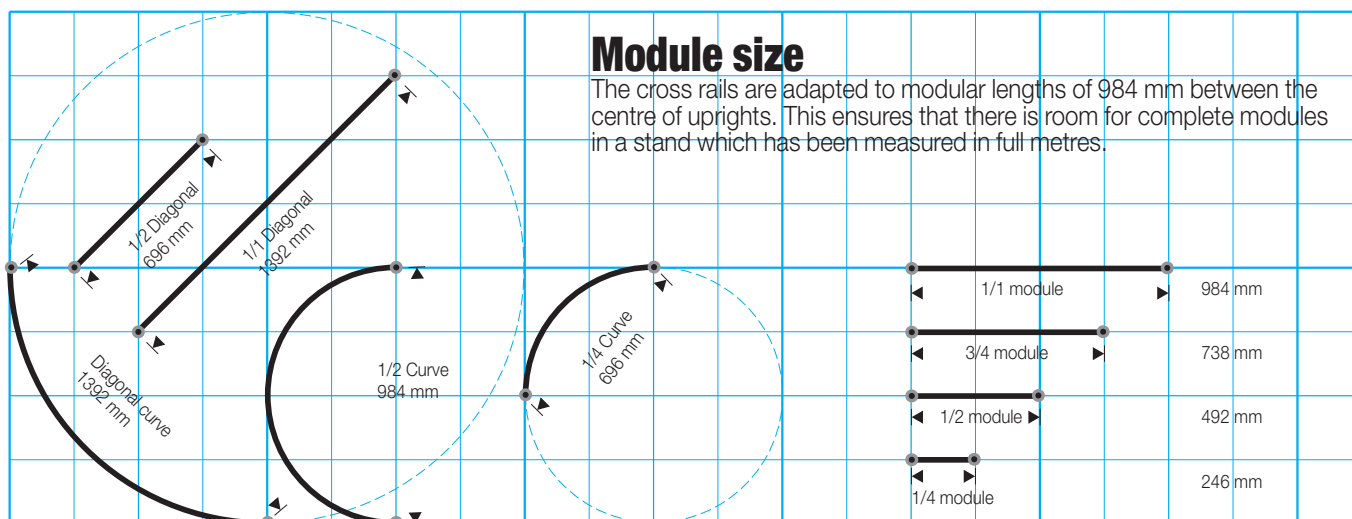
150 mm cross rail

Without joint and connectors

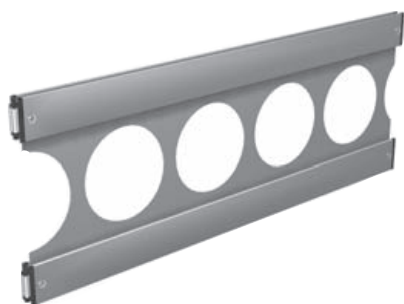
- 1101-1** in 5 m lengths

Module size

The cross rails are adapted to modular lengths of 984 mm between the centre of uprights. This ensures that there is room for complete modules in a stand which has been measured in full metres.

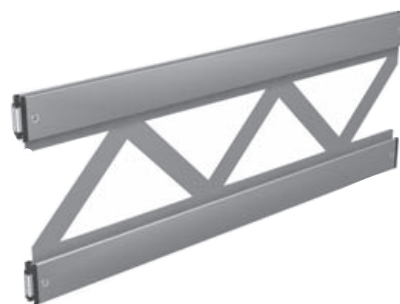
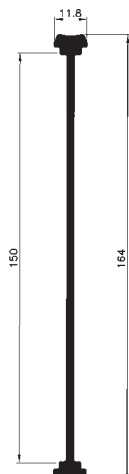


Decorative panels



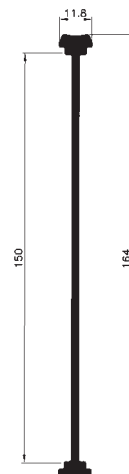
1108-3

Decorative section with holes for fitting between two cross rail/uprights. In lengths specific to the project.



1108-4

Decorative sections with diagonal ridges for fitting between two cross rail/uprights. In lengths specific to the project.



7

Accessories for cross rail



1106-5

Connector for 50 mm cross rail, black nylon, rounded for cross rail/upright

1106-6

Connector for 50 mm cross rail, light grey nylon, rounded for cross rail/upright

1106-7

Connector for 50 mm cross rail, black nylon, flat for cross rail/cross rail

1106-8

Connector for 50 mm cross rail, light grey nylon, flat for cross rail/cross rail



1108-6

Connector for 45° joint for 50 mm cross rail, black nylon, rounded for cross rail/upright

1108-8

Connector for 30° joint for 50 mm cross rail, black nylon, rounded for cross rail/upright



1106-1

Connector for 150 mm cross rail, black nylon, rounded for cross rail/upright

1106-2

Connector for 150 mm cross rail, light grey nylon, rounded for cross rail/upright

1106-3

Connector for 150 mm cross rail, black nylon, flat for cross rail/cross rail

1106-4

Connector for 150 mm cross rail, light grey nylon, flat for cross rail/cross rail



1105-7

End plug for 50 mm cross rail, black nylon

1105-8

End plug for 50 mm cross rail, light grey nylon



1106-10

Joint for 50 mm and 150 mm cross rail



1106-9

Screw for joint



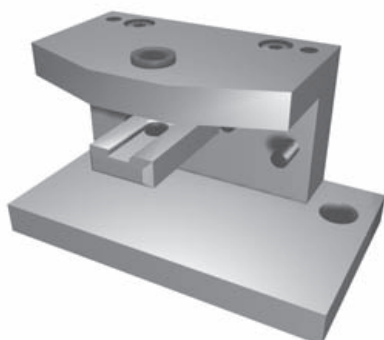
1108-7

30° joint for 50 mm cross rail



1108-5

45° joint for 50 mm cross rail

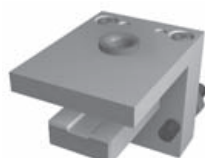


1105-50

Drilling tool for 50 mm and 150 mm cross rails

1105-51

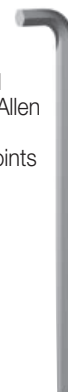
Drilling tool for 50 mm and 150 mm cross rails



1105-40
Allen key for joint



1105-41
Special Allen key for corner joints



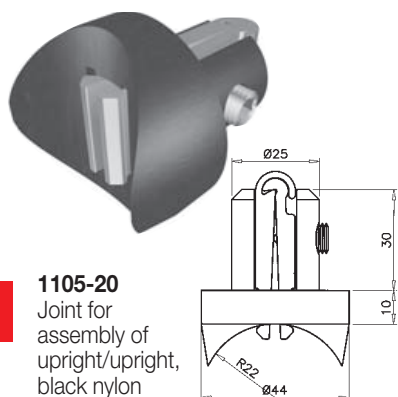
1105-42
Ratchet with Allen key for joints



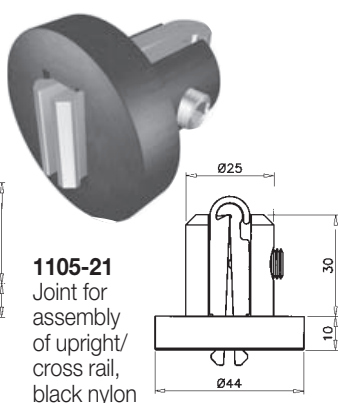
Accessories

There is a comprehensive range of accessories for Cobra Expo. These include items which give the system additional scope options, and practical items which help make exhibition stands work.

8



1105-20
Joint for
assembly of
upright/upright,
black nylon



1105-21
Joint for
assembly of
upright/
cross rail,
black nylon

1108-9
Suspension
fitting for 50 mm
cross rail



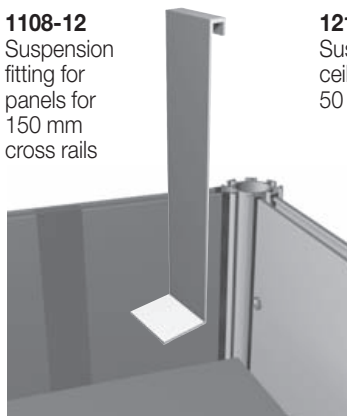
1108-10
Suspension fitting
for 150 mm
cross rail



1108-11
Suspension fitting
for panels for
50 mm cross rails



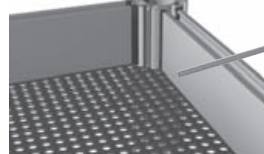
1108-12
Suspension
fitting for
panels for
150 mm
cross rails



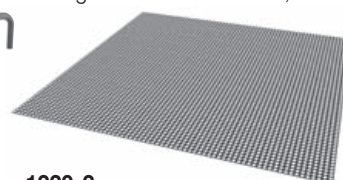
1219-1
Suspension fitting for
ceiling sections for
50 mm cross rails



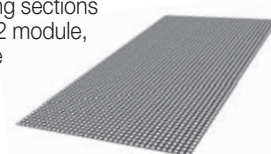
1219
Suspension fitting for
ceiling sections for
150 mm cross rails



1220-1
Ceiling sections 1x1 module, white



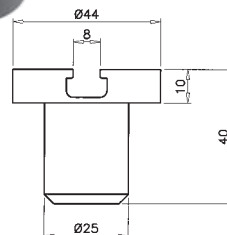
1220-2
Ceiling sections
1x1/2 module,
white



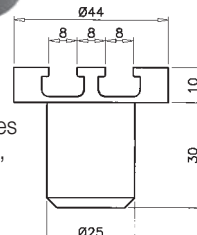
Using a curve
joint, cross rails
can be fitted on
top of uprights,
e.g. as curves.



1105-22
Joint for fitting
curves to
uprights,
single

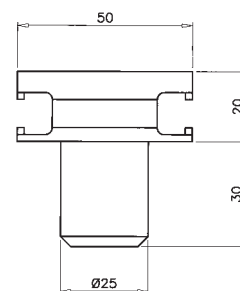
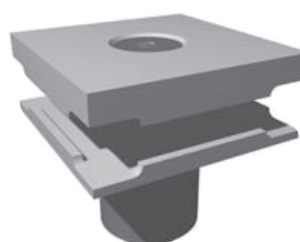


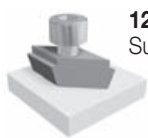
1105-23
Joint for
fitting curves
to uprights,
double



Using a joint for ceiling
construction,
cross rails can be
fitted horizontally on
top of uprights as part
of the ceiling or as
decorative features.

1106-11
Joint for e.g. ceiling
construction





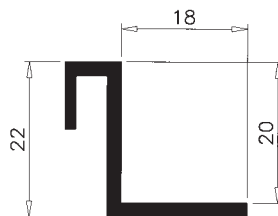
1231
Suspension fitting



1231-1
Suspension fitting
with eye screw



1105-31
Shelf support for mid-tubes, silver anodised
1105-12
Shelf support section, in 5 m lengths



1105-30
Shelf support
for uprights,
light grey nylon



1218
Suspension fitting
for photographs/
graphics panels

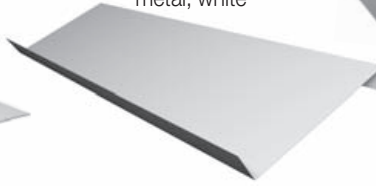
1211
Shelf support



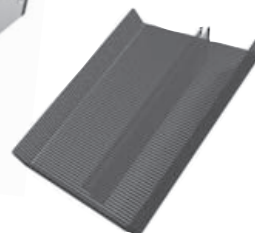
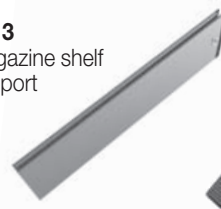
1210
Shelf, metal, white



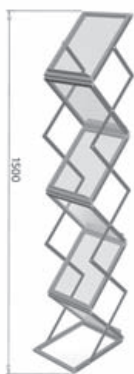
1212
Magazine shelf,
metal, white



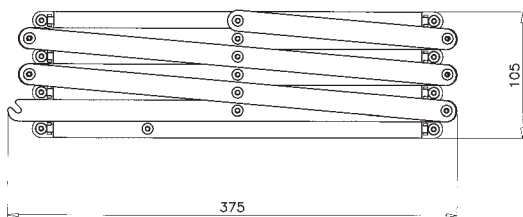
1213
Magazine shelf
support



1217
A4 leaflet shelf



1217-1
Leaflet stand, folding



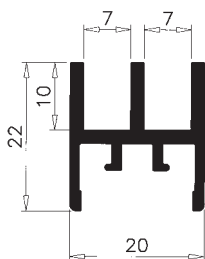
1214
Suspension rack for photos



1214-1
Corner extension for suspension rack for photos

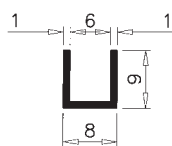
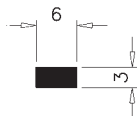


1215
Coat hook fitting



1105-13
Sliding door section in
5 m lengths

1105-9
Fibre section



1105-10
Plastic U-shaped
trunking for concealing
electric cables,
light grey nylon



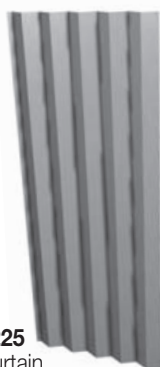
1222
Spotlight with
100 W bulb

1223
Halogen spotlight
with 200 W bulb

1216
Small coat
hook fitting



1222-1
Halogen
spotlight



1225
Curtain



1226
Side-hinged door

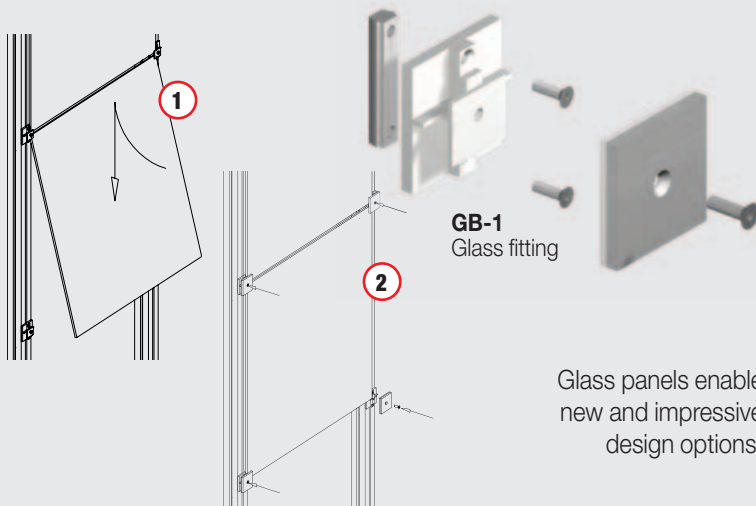


1230
Folding
door with lock



Standex fitting for glass panels

- for eye-catching and sophisticated design



Glass panels enable new and impressive design options.

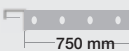



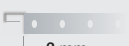


Standex Cobra wall

- frameless stand design



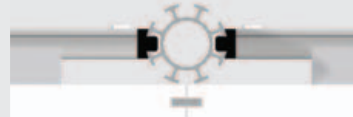
For panels with:

VS-1		1 unit module
VS-2		1/2 unit module
VS-3		3/4 unit module
VS-4		1/4 unit module
VS-S		special unit module

The Cobra walls consist of a coated MDF board for easy mounting of your graphics.



Standex Cobra walls conceal the construction system giving a flat wall for graphic displays.

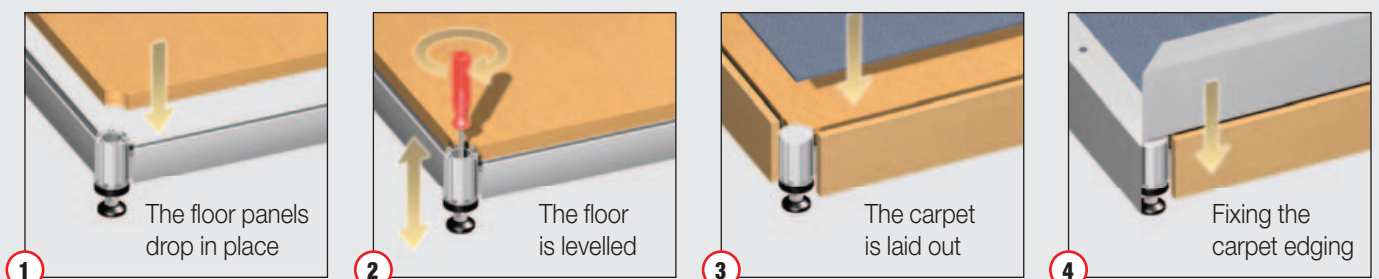
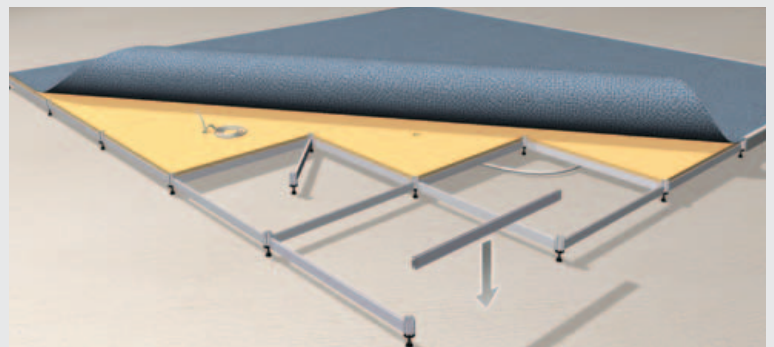


Seen from above

Standex technical floor

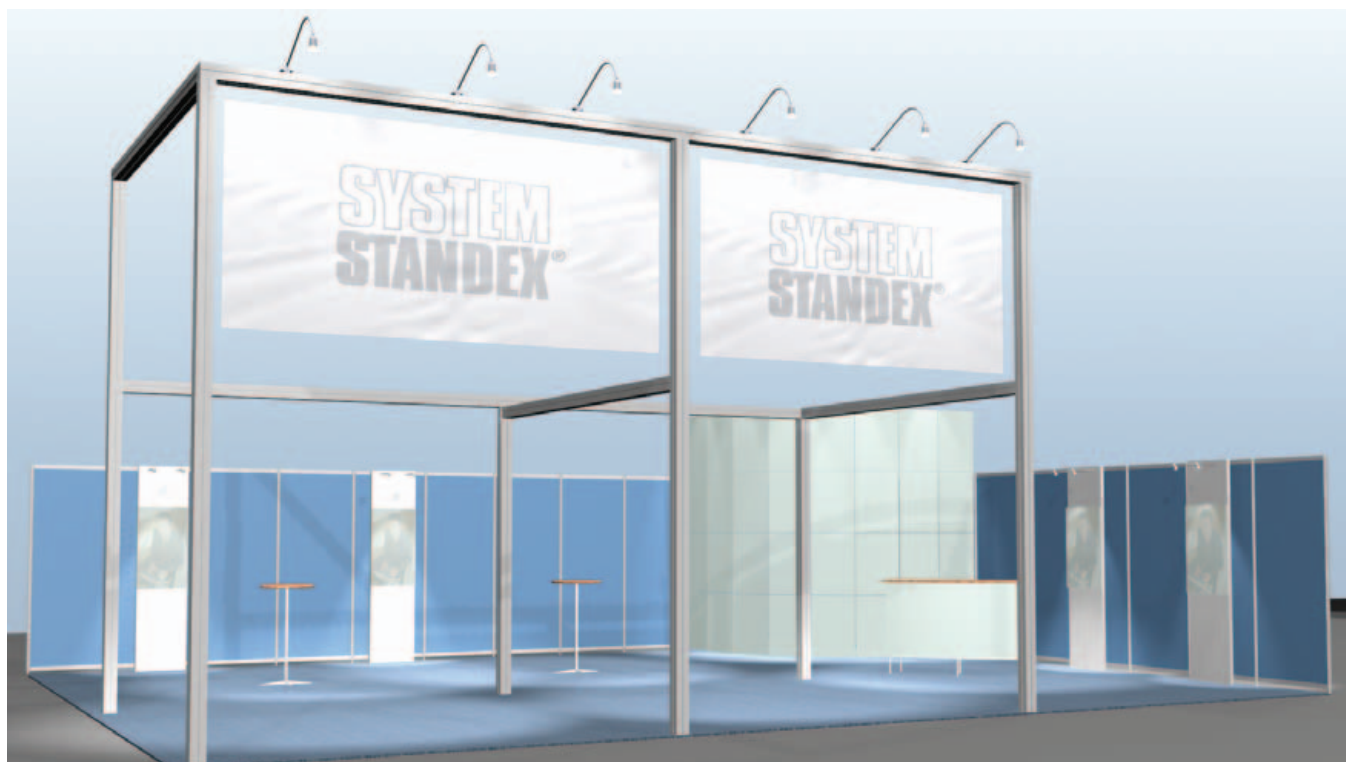
- raised level exhibition stands

A raised level floor (110 mm) make electrical and computer cabling simple. A modular system easy to assemble.

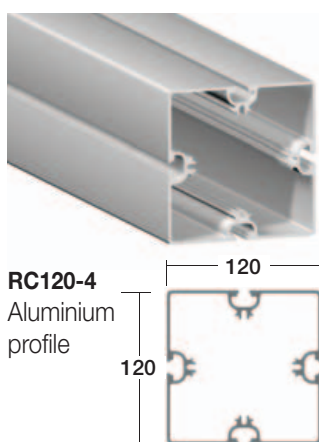


Standex Mega Profile system

- for exhibition stands with a strong visual presence



11

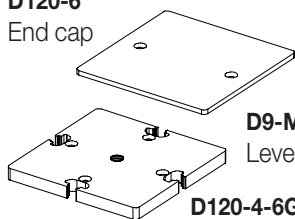


RC120-4
Aluminium
profile

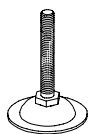
Accessories

The profile groove in Mega Profil RC120-4 can be used for fitting of plates or for accessories for mounting of banners and other equipment. System Standex offers standardized solutions for various specific tasks. Do not hesitate to contact us, if you wish to find the best solution for your task.

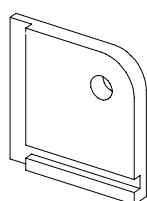
D120-6
End cap



D9-M10
Levelling foot M10

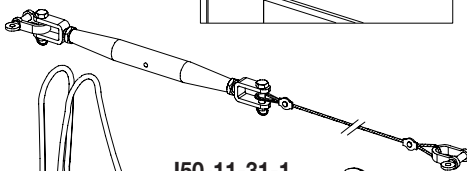


D120-4-6G/M10
Bottomplate with thread



WS-120-1
1 pair of
corner plates

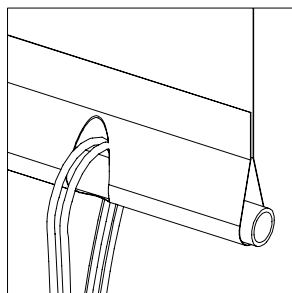
WS-120-2
Complete wire
with turnbuckle



I50-11-31-1
Insert nut with
eye screw

BAN-120-1
Elasticband
with hook

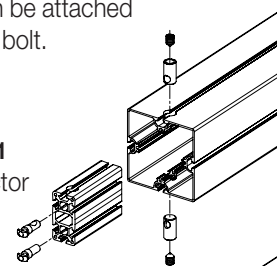
R15-1
Aluminium
tube Ø15
mm



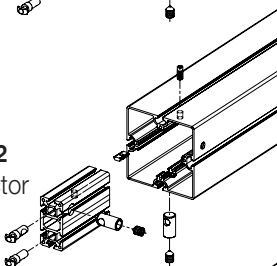
Joints

Mega Profiles can be assembled anywhere on the side of the profile. Joints are made with connectors that have been developed especially for this system. A PC120-1 connector is slid into the profile, and a hole is drilled so that a joint link can be attached with a wedge bolt.

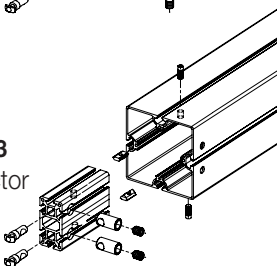
PC120-1
Connector



PC120-2
Connector



PC120-3
Connector

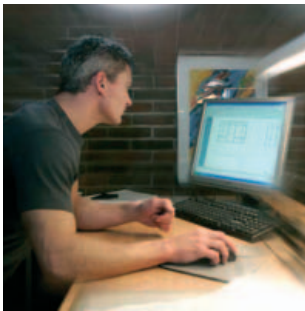


Your partner



SYSTEM STANDEX®

Display design



System Standex has worked in display design for more than 30 years. This gives us a practical and creative base for the development of our display systems.

We use the latest CAD technology in designing displays so that we can give a realistic 3-dimensional impression of the final result at the drawing board stage.

Contact us about Cobra Expo and let us find a solution to suit your needs.

Large production capacity

System Standex has its own development and production facilities for all Cobra Expo parts. This gives you security that the system can be supplemented at any time.

Our production capacity and flexibility mean that you can be sure of fast deliveries when time is short. At the factory, we can always make adjustments and supply special solutions.

**SYSTEM
STANDEX®**

System Standex A/S
Herluf Trolles Vej 140
DK-5220 Odense SØ
Tel.: +45 66 15 66 15
Fax: +45 66 15 55 48
E-mail: info@system-standex.dk
www.system-standex.dk